



The new wave in Wastewater Treatment

AiroGreen Aerated Wastewater Treatment System

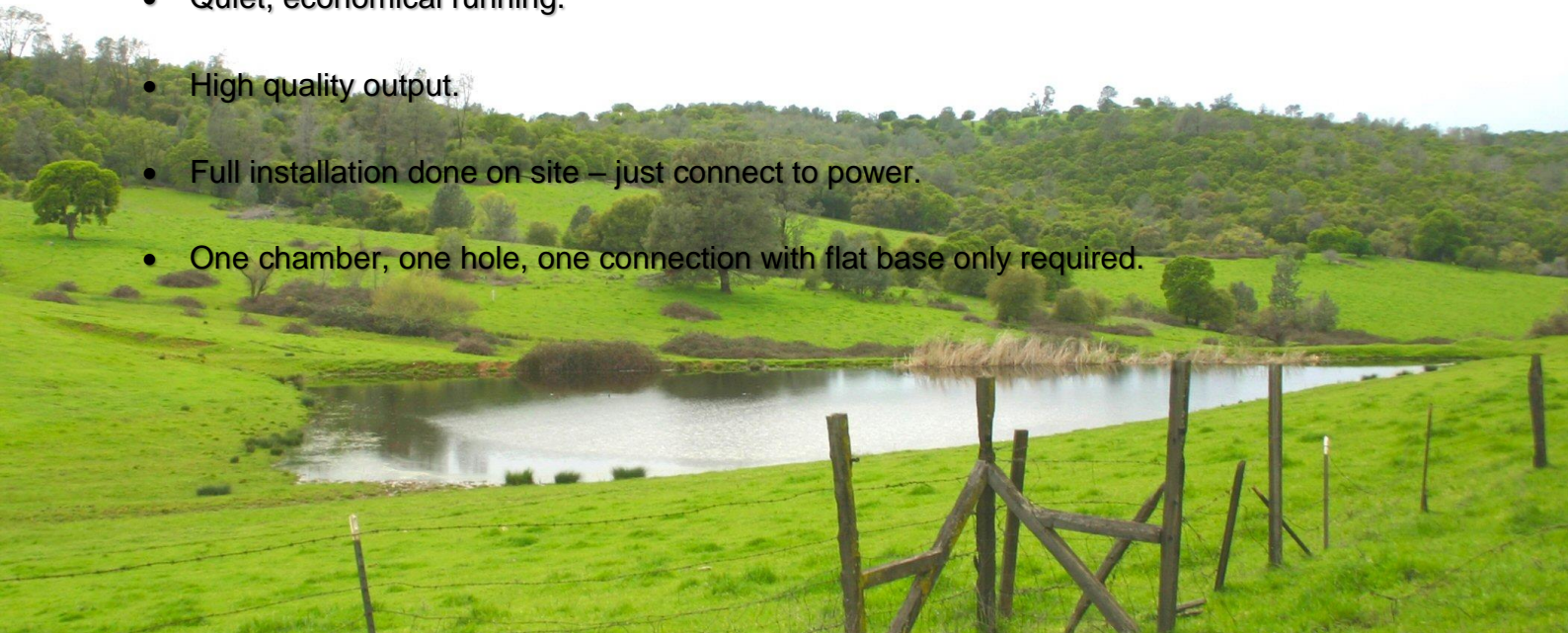
Developed in New Zealand for and by New Zealanders.

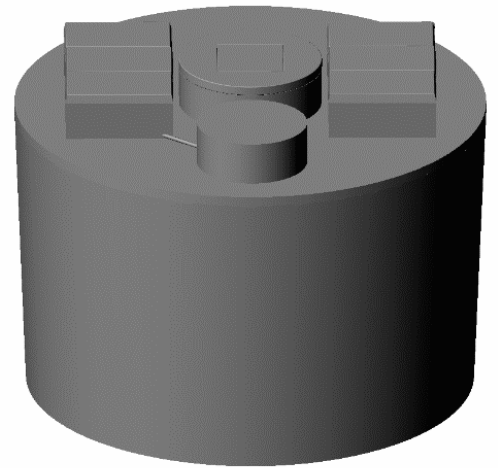
The AiroGreen sewage treatment system is designed to quietly and efficiently deal with 2000 l/day of household effluent and is manufactured to international standards and to achieve internationally recognised performance standards.

Other sizes and configurations of treatment systems are also available to make sure that we give our customers the best solution and value for their money.

Advantages and Features

- Highest quality concrete construction.
- Manufactured to exceed AS/NZS 1546 and AS/NZS 1547 standards.
- Better emergency capacity.
- Low maintenance design.
- Simple waterproof controls and alarm system.
- Simple electrical hook-up and installation.
- Quiet, economical running.
- High quality output.
- Full installation done on site – just connect to power.
- One chamber, one hole, one connection with flat base only required.



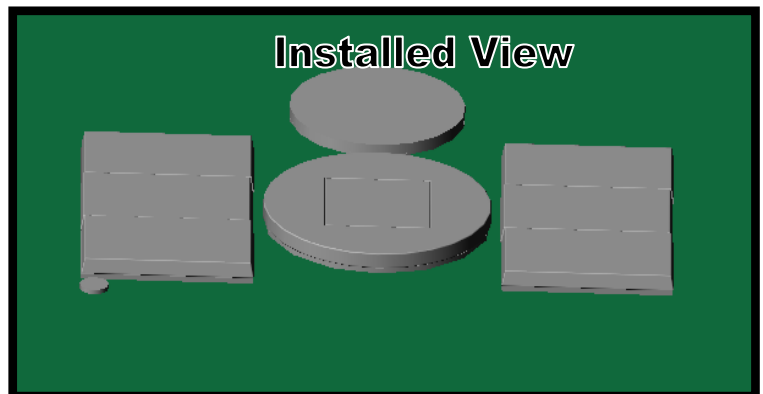


Why an Aerated treatment system?

Groundwater is a precious resource, when it's clean we have many uses for it. Groundwater eventually arrives at rivers and lakes where it becomes obvious what condition it's in. It only takes 15 households using old-style septic tanks in a square kilometre to pollute the groundwater. An effective aerated treatment system will prevent groundwater pollution.

Why the AiroGreen system?

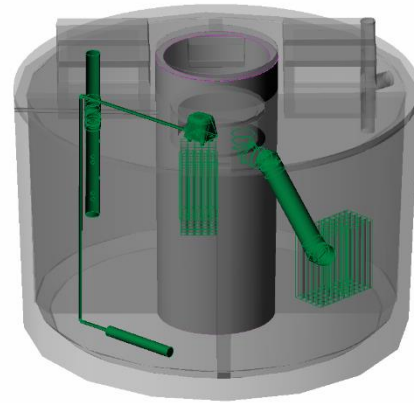
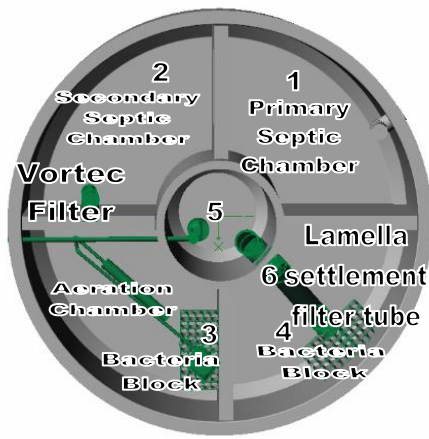
- The AiroGreen system is a single unit septic tank and advanced treatment system built out of solid concrete. It can be buried without problems and only 50mm of the risers and the lids need to be above ground to allow the system to breathe in the air used in the process and to prevent ground water ingress.
- The AiroGreen system is simple which saves costs on on-going maintenance.
- It consists of a 7-stage advanced treatment system built into a single unit.
- Since 1932 we have been building modular tanks for water and sewerage and over that time have developed and pioneered sewage systems in New Zealand.
- We have utilised technology transfer and continual improvements to find our customers the best systems for their needs.
- We have always serviced our products. Our experienced technicians are available for direct contact with our customers and most problems can be diagnosed over the phone.
- We provide long-term customer back up and maintain a credible servicing system for every unit.
- We manufacture, assemble and fit out all products within our covered complex to ensure consistent quality and results.



Treatment Process

- Step 1: 3830L dual stage Septic Tank.
- Step 2: Effluent filter for Suspended Solids reduction.
- Step 3: Aeration chamber that utilises an air blower and diffuser, which creates large quantities of micro-bubbles. Micro bubbles help grow aerobic bacteria which eats the nutrients in the wastewater and promotes separation of particles and creates activated sludge.
- Step 4: Fixed media filtration, which further promotes bacteria to reduce odours.
- Step 5: Humus settlement and recycling chamber allowing any remaining particles to settle be recycled back to the aeration tank for further treatment.
- Step 6: A Laminar Tube filter system, which promotes settling of particles to leave the final wastewater clear and odourless before entering the final dosing chamber.
- Step 7: Collection and further settling for dosing of the disposal field – some is also recycled back through the system to seed influents.

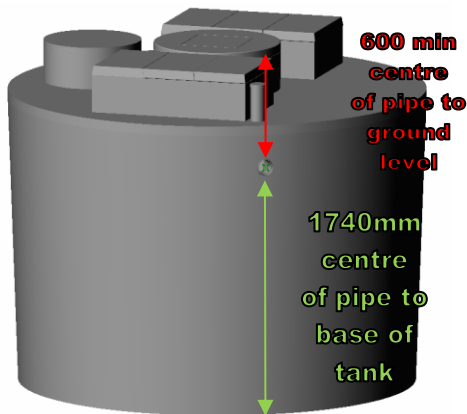
Transform Pollution into a Clean Solution



Maintenance

Maintenance on the AiroGreen system is very basic, it involves cleaning the air filter on the air pump, hosing off the Vortec filter, checking irrigation pump and bubble diffuser and flushing the irrigation field if needed. This maintenance should be carried out every 4 months with the first year carried out at no charge. After the first year a very economical contract will be offered annually.

The Fixed Media filters need no maintenance ever, the more gunge they accumulate the more bacteria they will promote to help with the treatment process.



Installation Depth

The depth of the installation will depend on the depth of the sewer pipeline. Collars to allow a deeper installation are available on request. The concrete lids need to be above ground to allow air to circulate through the system. A typical installation will include 300m of dripper irrigation line.

Technical Specifications.		Tank Dimensions.	
Dual Chamber Septic Tank	- 3830 L	Diameter OD	- 2.9m
Aeration Tank	- 1915 L	Height	- 2.4m
Humus Tank	- 845 L	Weight	- 7 tons
Pumpwell		Invert height	- 1740 from base of tank
Total Operating Capacity	- 8505 L		
Total Holding Capacity	- 9505 L		

Transform Pollution into a Clean Solution